

# Va

vivek  
anandhan



## ARCHITECT / PLANNER / MBA

Architect – Planner with over 20 years' experience in planning, designing, detailing and coordinating with multi disciplinary teams and execution of projects.

## EDUCATIONAL QUALIFICATION

Bachelor of Architecture (B. Arch) - Thyagarajar College of Engg, MKU, 2001  
Master of Planning (M. Plan) - Anna University, 2004  
Master of Business Administration (M.B.A, Project Management), SMIT, 2011.

## PERSONAL DETAILS

- Name : Vivek Anandhan N.V
- D.O.B : 25.12.1978, India
- Sex : Male
- Nationality : Indian
- Marital status : Married
- Passport Number : Old - F0542832 / New -Z2387125.
- Countries of Work Experience : India, UAE, UK.
- Driving License : India, UAE
- Mobile : +919176675592
- Email : vivek.thesquare@gmail.com
- Address : 78, Natarajan Street, Vadapalani, Chennai – 600 026, India.

## CORE COMPETENCIES

- Architectural Design
- Urban Planning
- Specialization in Hospitality Industry for 10 Years.
- Interior Design
- Construction Documentation
- Landscape design
- Commercial and Residential buildings
- Site planning
- Graphic presentations and Layouts
- Photography
- Sustainable Building practices
- Painting and free hand sketching.
- Design Thinking

## CERTIFICATIONS

- Certificate in Basic First Aid, including CPR. Nov 2007, Nov 2008. Trained by Euroline Safety, Dubai. Ministry of Health approved. Ministry of Labor and Social Affairs approved.
- Health and Safety training with Certificate of Achievement in Display Screen Equipment Training. April 2008, Dubai.
- Fire Safety Awareness Training, June 2008, Dubai.
- Manual Handling Awareness Training, June 2008, Dubai.
- Office Safety Training, June 2008, Dubai.
- Certificate of proficiency in Business English- Upper Intermediate level. Trained by International House Dubai, Accredited by IHWO and Ministry of Education, Dubai. Aug 2008.
- Certificate of training in Contract Administration. Aug 2007, Dubai
- Certificate on CPD Technical Seminar on Protection of Structures against water from ground, April 2008.

## SOFTWARE SKILLS

- Auto CADD
- 3DStudio Max
- Adobe Photoshop
- Sketch Up
- In Design
- Corel Draw
- Micro Soft Suite of programs - Office, Power Point, Excel etc.

## AFFILIATIONS

- UAE Engineer Association
- AIIA (All India Institute of Architects)
- COA (Council of Indian Architects)
- AIITP (All India Institute of Town Planners).

## LANGUAGES:

- English
- Tamil
- Telugu
- Malayalam
- Hindi

## AWARDS AND RECOGNITIONS

- Employee of the Year. Mouchel 2007, 2008.
- Won ISHA building design, Bangalore, India.
- Won SIFC building design, Chennai, India.
- National level Award in Painting competition. 1994, 1996, India.
- 280 awards in Painting and sketching, including 5 at State level.

Ascott Intl  
Mgmt. Ltd



## HEAD DESIGN – INDIA & GCC



## HEAD DESIGN, INDIA & GCC

Heading the design team of Architects and liaising with Engineers of various disciplines. Responsible for spearheading all projects on the Design front including investments, joint ventures, management Contract projects. Advise development aspects of the projects right from Feasibility Study (for the right choice and positioning of the brand) of the project to Design management and support during construction until completion and soft opening of the project. Review and set brand design guidelines for different products – serviced apartments (Ascott, Somerset & Citadines). Complete process owner of review and approval of Architecture and Interior Design for all projects

### CITADINES OMR, CHENNAI, TAMIL NADU.

One of the brands of Ascott's serviced apartments targeting young international travelers. With a total built-up area of 28732 sq.m with 269 keys at a cost of 55 Million USD.



### ASCOTT IREO CITY GURGAON, NEW DELHI.

Management Contract of Ascott's serviced apartments targeting elite international business travelers. With a total built-up area of 18900 Sq.m with 221 keys.



### SOMERSET WHITEFIELD, BANGALORE, KARNATAKA.

One of the brands of Ascott's serviced apartments targeting families of working international travelers. With a total built-up area of 28000 sq.m with 259 keys at a cost of 60 Million USD.

### CITADINES PARIMAL GARDEN, AHMEDABAD, GUJARAT.

One of the brands of Ascott's serviced apartments targeting young international travelers. With a total built-up area of 13100 sq.m with 180 keys at a cost of 30 Million USD.

## DESIGN HEAD - INDIA CLUSTER PROJECTS

### SOMERSET GREENWAYS CHENNAI, TAMIL NADU.

One of the brands of Ascott's serviced apartments targeting international travelers with family. With a total built-up area of 27036 sq.m with 187 keys at a cost of 40 Million USD.



### CITADINES RMZ GALLERIA, BANGALORE, KARNATAKA.

One of the brands of Ascott's serviced apartments targeting young international travelers. With a total built-up area of 22000 sq.m with 203 keys at a cost of 40 Million USD.



### CITADINES HI-TECH CITY, HYDERABAD, ANDRA PRADESH.

One of the brands of Ascott's serviced apartments targeting young international travelers. With a total built-up area of 8950 sq.m with 160 keys at a cost of 32 Million USD.



Ascott Intl  
Mgmt. Ltd



DESIGN HEAD - INDIA CLUSTER PROJECTS

CITADINES CALANGUTE GOA.

Management Contract of Citadines serviced apartments targeting young international travelers. With a total built-up area of 26444 Sqm with 149 keys.



CITADINES PARAS SQUARE GURUGRAM.

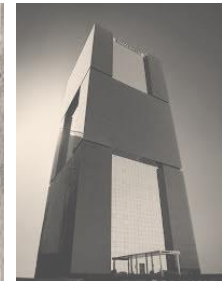
Management Contract of Citadines serviced apartments targeting young international travelers. With a total of 94 keys.



DESIGN HEAD / GCC - CLUSTER PROJECTS

SOMERSET PANORAMA MUSCAT,  
OMAN.

One of the brands of Ascott's serviced apartments targeting families of working international travelers. With a total built-up area of 28000 sq.m with 303 keys at a cost of 70 Million USD.



SOMERSET WESTBAY  
DOHA, QATAR.

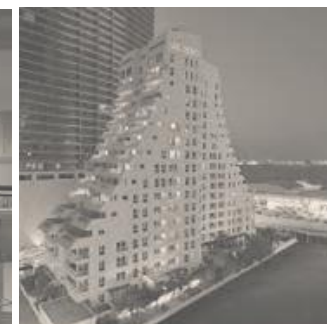
Re-design / Asset Enhancement Initiative of the 180 Keys functioning property located in Doha

ASCOTT DOHA, QATAR.

A new tailor-made property with ultimate luxury high end property located in Doha

ASCOTT TAHLIA JEDDAH,  
KINGDOM OF SAUDI ARABIA.

Management Contract with one of the prime developers in KSA for one of the brands of Ascott's serviced apartments targeting elite international travelers.



SOMERSER AL FATEH,  
BAHRAIN

Re-design / Asset Enhancement Initiative of the 192 Keys functioning property located in Bahrain.

MILFORD ADVISERS -  
NOV 2011 – NOV 2011

## SENIOR ARCHITECT – MANAGER DESIGN

Responsible for all aspects of project programming, architectural design, mechanical and electrical drawing coordination, construction documents and construction supervision

Had an opportunity to work on a variety of projects including Hospitality projects, commercial spaces and residential projects. Responsible for managing design, liaise with International Architects and other consultants, prepare project schedule and monitor the progress with parallel check with the cost of the project to keep it within the stipulated budget.

### HILTON GARDEN INN, JACOB JUNCTION, TRIVANDRUM.

One of the brands of the Hilton group of hotels with 180 keys. Was responsible for managing the complete aspect of the design in liaison with International Architects. Prime aspect of the project was conversion of the existing Muthoot Plaza by addition of new structure with additional 100 keys. Was responsible as the Design Manager for this project.



### HILTON GARDEN INN, OMR, CHENNAI.

One of the brands of the Hilton group of hotels with 180 keys. Was responsible for managing the complete aspect of the design in liaison with International Architects FRCH Design Worldwide – Principal Architects of design, BURO Structural Engineers, Archetype Project Managers, Spectral Services - MEP Engineers & LEED Facilitation, Hilton Technical Services, BOH Facility Planners, SSPDL – Liaison agent, Quadriga Architects – Architects on record. Was responsible for all aspects of the project ensuring complete coordination between all consultants.

### FORD SHOWROOM, PATHANAMTHITTA, KERALA.

Prefabricated structure of Ford's car showroom at Pathanamthitta, Kerala. Was responsible as the Design Manager for this project.

### THE TAJ GATEWAY, KAKANAD, KERALA.

One of the brands of Taj at Kakanad with 170 keys. Was responsible as the Design Manager for this project.

### TECHNOPOLIS IT PARK, KAKANAD.

Was responsible as the Design Manager for this project at Cochin Special Economic Zone, Kochi, Kerala. Site Location: Technopolis, Cochin Special Economic Zone, Kochi, Kerala, Area: 7825 SM (84,228SF), Ground Coverage: 40 % (N/A), Building Area (FAR) 3446 SM (37,100 SF), Maximum building height: TBD, Construction type Steel frame with interior block wall construction, Building Exterior: Composite building panel (CBP) + curtain wall system.

### HONDA SHOWROOM, KOLLAM, KERALA.

Prefabricated structure of Honda's car showroom at Kollam, Kerala. Was responsible as the Design Manager for this project.

### VIVANTA BY TAJ, TRIVANDRUM.

One of the brands of the Taj group of hotels with 59 hillside cottages over 10 acres that reflects Kerala culture with Balinese influences. Was responsible for managing the new expansion of 16 more units in co-ordination with International Architects and all other consultants.



Milford  
Advisors

TRIVANDRUM



# Mouchel Dubai



MOUCHEL, DUBAI  
Feb 2007 – MAR 2010

## ARCHITECT & HEALTH AND SAFETY OFFICER.

Was involved in design development, site/master planning, landscape design, planting design, construction documentation, direct project coordination, and proposal submittal. Transformed functional and spatial requirements into feasible design solutions incorporating urban design, master planning, and sustainable design principles.

Manager for the Thrissur branch office of Mouchel from May 2009:

Over saw the transforming of complicated sketches into working drawings by coordinating various consultants, conference calls and communication, resolving several problems that surface while coordinating work that's being carried on in two countries. Develop project drawings and provide oversight for detailing and finishing work, drawing quality and submission.

Also acted as the Health and Safety Officer for two years

## JUMEIRAH VILLAGE SOUTH, NAKHEEL, (AUGUST 2007 TO NOVEMBER 2007):

Architect, Sphere heading the final design proposal scheme for Central Park, Jumeirah Village South. The proposal includes conceptual sketches for the hard and soft landscape of lagoons, play areas, restaurants, hotels, parks, abra stations etc.

## AL WASL (RIYADH, SAUDI ARABIA), LIMITLESS, 2008:

Created the basic concept evolution of a general theme for landscaping for the Sales Centre area. This includes 1400 Hectares of Open Spaces to be designed with a binding theme. Streetscape design for the different road types. Hardscape and softscape for the pocket parks and the wadi parks.

## KUWAIT HIGHWAYS, LIMITLESS, KUWAIT, 2008.

Sphere headed the evolution of the iconic bridge 1.4Km long structure right from the initial concept to detailed design.

## AL GHADEER, SOROUH, 2008:

Prepared the Landscape Architectural concept design for the Central Park and the over all Cyclist and Pedestrian circulation scheme. This is a joint venture of Mouchel and RNL. Review of Master Plan and the feasibility study and Proposals for constructive development are the other works done in this project.

## GHANTOOT, ICT (INTERNATIONAL CAPITAL TRADING LLC), 2008:

Created the basic concept evolution of a general theme for landscaping for various areas of different nature of function. The design had to address the Streetscapes and the open spaces integrally.



## JUMEIRAH COASTAL MANAGEMENT ZONE, DUBAI MUNICIPALITY, 2007:

Was responsible for the development of the final design proposal scheme along 1.4 Km stretch of beach. Created presentation drawings, conceptual sketches and perspective views for the project.

## DUBAI WATERFRONT, DWC, 2007:

Sphere headed the concept and detailed designing of the hard and soft landscape scheme for the Streetscapes for Dubai Waterfront, spread over approximately 4000 hectares located in the coast of Dubai.

Designed hardscape elements such as tea house, deck, walls, paving fountain and fencing. Developed complex and multi faceted planting scheme  
Coordinated with Architects with the villa and the multi-storey buildings in the Badrah Manara area. Organized progress meeting with the client and the other consultants. Liaise and acted as an interface between the client and the Dubai drawing production team. Was responsible for checking and controlling the quality of the deliverables.

**ARCHITECT - PLANNER**

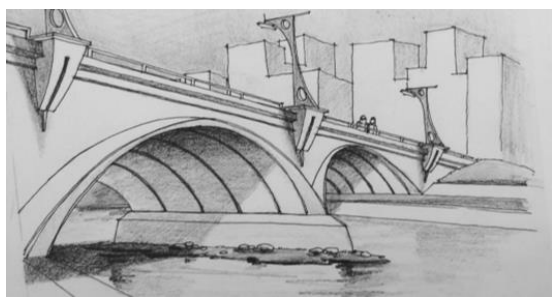
Was the main architect in the "Bridges" Department. Was responsible for developing initial design, conceptual sketches. Were the leading individual contributor and coordinator of design problem solving. Assisted in the development of design or design development drawings, develop base sheets and construction details for the projects.

Assured the generation of an adequate variety of conceptual design alternatives to satisfy the client needs and the requirements of the project specifications. Coordinated design personnel for the implementation of design documents for projects and ensuring compliance of plans to various regulatory codes.

Was also responsible for preparation of construction documents and specifications for the projects. Develop presentation drawings and coordinate drawings with other disciplines. Applied artistic expertise and technical skills to create freehand sketches and color architectural presentations, rendering and site plans.

**LA VILLE CONTEMPORINE - BUSINESS BAY, DUBAI PROPERTIES, 2006:**

Architect for this project to design various bridges, piers, columns based on a concept of various forms of evolution. This project had a lot of bridges sporadically distributed all over the project area. Hence all the bridges were designed with some common features which relate them with each other.



**PALM JEBEL ALI, NAKHEEL, 2006:**

Designed the bridges in the fringe area and in the main spine. The services also included the aesthetic architectural detailing for the Palm tunnel and the beautification of the surrounding area with landscape design.

**LAYYAH BRIDGE, DM, 2006:**

Architect, spearheading the Architectural concept design and presentation of the Layyah Bridge for the Ruler of Sharjah, His Highness Sheikh Sultan Bin Mohammad Al Qassimi. The Bridge was designed to reflect the traditional Arabic and Islamic Architecture.

**DUBAI HEALTH CARE CITY, SAMA DUBAI, 2006:**

Architect responsible for Concept evolution and design of various vehicular and pedestrian bridges. These bridges were designed in contemporary style to be in harmony with the surroundings as DHCC had contemporary style of Architecture.

**THE LAGOONS, SAMA DUBAI PROPERTIES, 2006:**

Was responsible for the concept design of vehicular bridges, causeways based on the proposed Master plan for surrounding forms. The bridges were designed in Andalusian style.

**AL JADDAF, DUBAI PROPERTIES, 2006:**

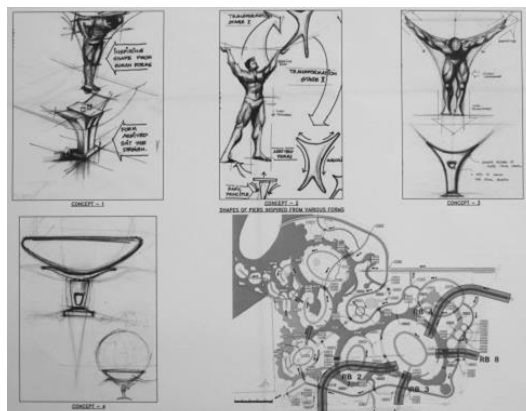
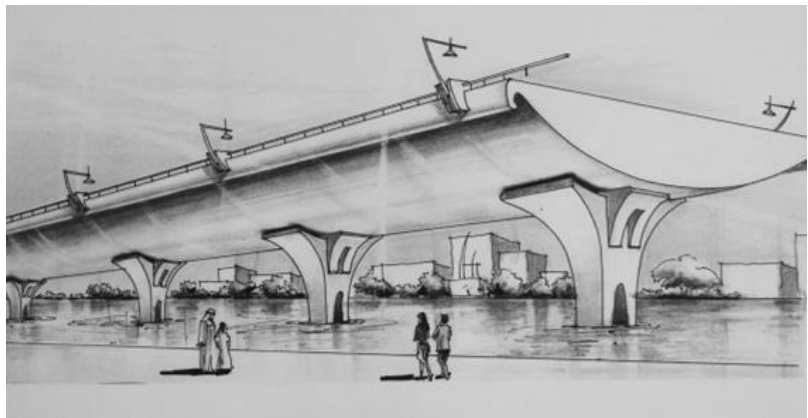
Architect spearheading the concept design of pedestrian bridges. The bridges were designed to cross over a channel. The design considerations were taken to allow small boats passing through.

**ABU SHAGGARA, DUBAI PROPERTIES, 2006:**

Architect responsible for design of the 8-span bridge. The design was made to accommodate potential investment opportunities incorporated remunerative elements such as the LED display boards for advertisements.

**PALM JUMEIRAH, NAKHEEL, 2006:**

Was responsible for the design of the Main and secondary connecting bridges in the residential area. The bridges on stilts were designed in local style to match the Villas on water.





**ARCHITECT – PARTNER**

Responsible for all aspects of an architectural firm, from project programming, architectural design, mechanical and electrical drawing coordination, construction documents and construction supervision

Had opportunity to work on a variety of projects including educational, municipal, professional office, institutional, commercial, religious, recreational, and residential. Responsible for site design, consultant coordination, in house coordination with design team etc.



**CARDIAC SPECIALTY HOSPITAL,  
GURGAON, NEW DELHI, INDIA.**

Designed the 500-bed hospital, with International Standard and quality in collaboration with AGS, a US based private Engineering practice specialized in Hospital Projects. The design of the Multi story building included integration of various services and free flow of traffic between various departments, OP, Lab, food services and parking.

**HOLIDAY RESORT FOR THE  
ELDERLY, PONDICHERRY, INDIA.**

This was a luxury resort designed for the elderly, including a lot of leisure facilities like multi purpose playgrounds, mini golf course, swimming pools, auditorium, and library. The anthropometrics were totally based on the abilities and disabilities of the elderly. The interiors were designed to be calm and peaceful and hence more open planning and a lot of landscape in the design.

**SOUTH INDIA INSTITUTE OF  
FILM CHAMBERS, CHENNAI,  
INDIA.**

This building was a winning design in a closed competition project. This housed two mini theatres, office rooms, a conference hall and a food court.

**ISHA (INDIAN SOCIETY FOR HEALTH  
ADMINISTRATORS), BANGALORE, INDIA.**

A competition project which was awarded after being chosen as the successful design. Landscape design in the project was the winning edge. The organic shape of the building structure was designed without disturbing even a single tree of the site (coconut grove). This project involved very contemporary design of a library, yoga and meditation halls, lecture rooms, administration block and the guest rooms.

**MEENAKSHI MISSION HOSPITAL, CARDIAC  
SPECIALITY WING, MADURAI, INDIA.**

This was an extension to the existing facility of 500 beds. The 300-bed cardiac specialty wing was designed to international standards. Architecture of the existing building and the new structure was carefully integrated.

**PARAVAI DEVASTHANAM MATRICULATION  
SCHOOL, MADURAI, INDIA.**

This was a school building designed for a non profitable charity institution. This was more local design executed with locally available materials and hence very harmonious with the existing serene atmosphere.

**MEENAKSHI GROUP OF RESTAURANTS, TAMIL  
NADU, INDIA.**

Designed 27 restaurants where the main concept was the open kitchen. So careful designing was required. One of these restaurants was also a roof top one which involved a lot of landscape designs.

**RESIDENTIAL AND COMMERCIAL BUILDINGS**

Designed about 46 individual residential and commercial buildings including villas and apartments and their interiors. This also includes designing of prototypes for mass housing projects for builders and developers.

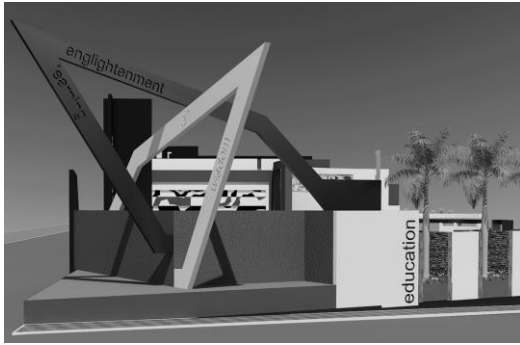
**HSBC FRANCHISE OFFICE, CHENNAI, INDIA.**

Interior design of banking space housing 120 employees. Free flow of spaces, Well Lit interiors and integration of working spaces was the main aspect of the design.

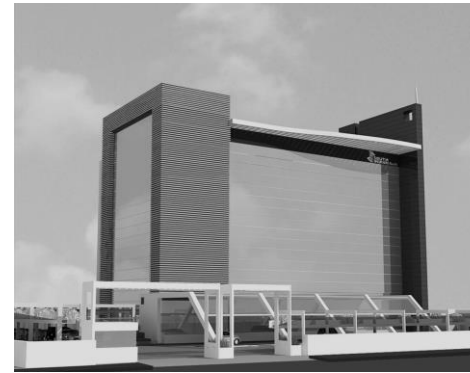
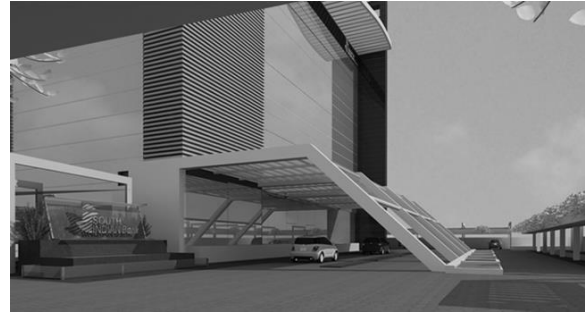
**BAHTKAL HOTEL APARTMENTS, BANGALORE, INDIA.**

This was a hotel apartment building done in Islamic style. This design had to house all the Islamic style if arrangement of interior spaces.

KARPAGAM UNIVERSITY - COIMBATORE  
2 Lakh Sft of Institutional building



SOUTH INDIAN BANK HQ - THRISSUR  
35000 Sft of Bank building at Thrissur



RANDY'S VILLA, CHENNAI  
A 6500 Sft high end villa - ECR



CSI CHURCH - CHENNAI  
A 30000 Sft Church at Saidapet



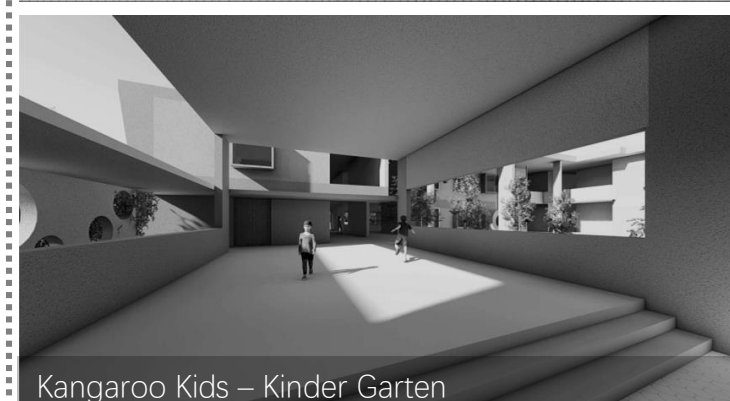
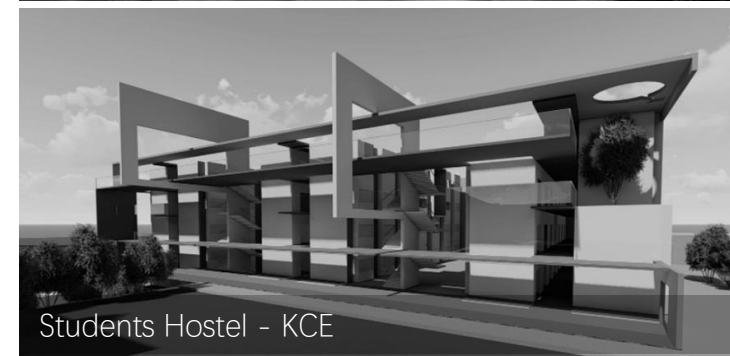
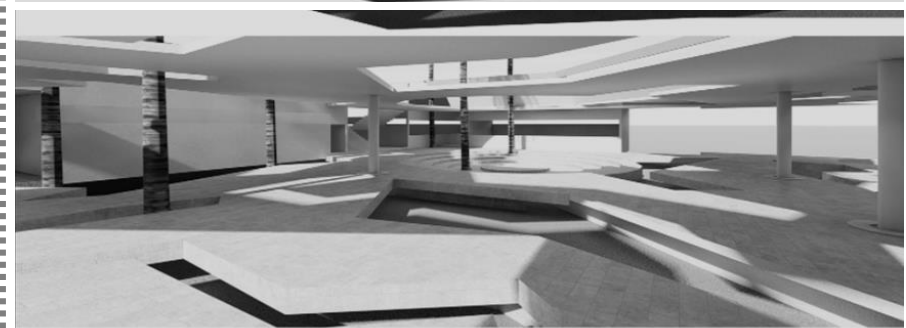
INDIAN SOCIETY FOR HEALTH ADMINISTRATORS  
80000 Sft Training institute for Doctors



Private Projects executed under The Square.

The Square

CHENNAI



# The Square

CHENNAI

Private Projects executed under The Square.

Placement Cell - KU

Students Plaza - KCE

Amphitheatre - Karpagam University

Students Hostel - KCE

Kangaroo Kids - Kinder Garten

Students Cafeteria - KIT

Students Plaza - KCE